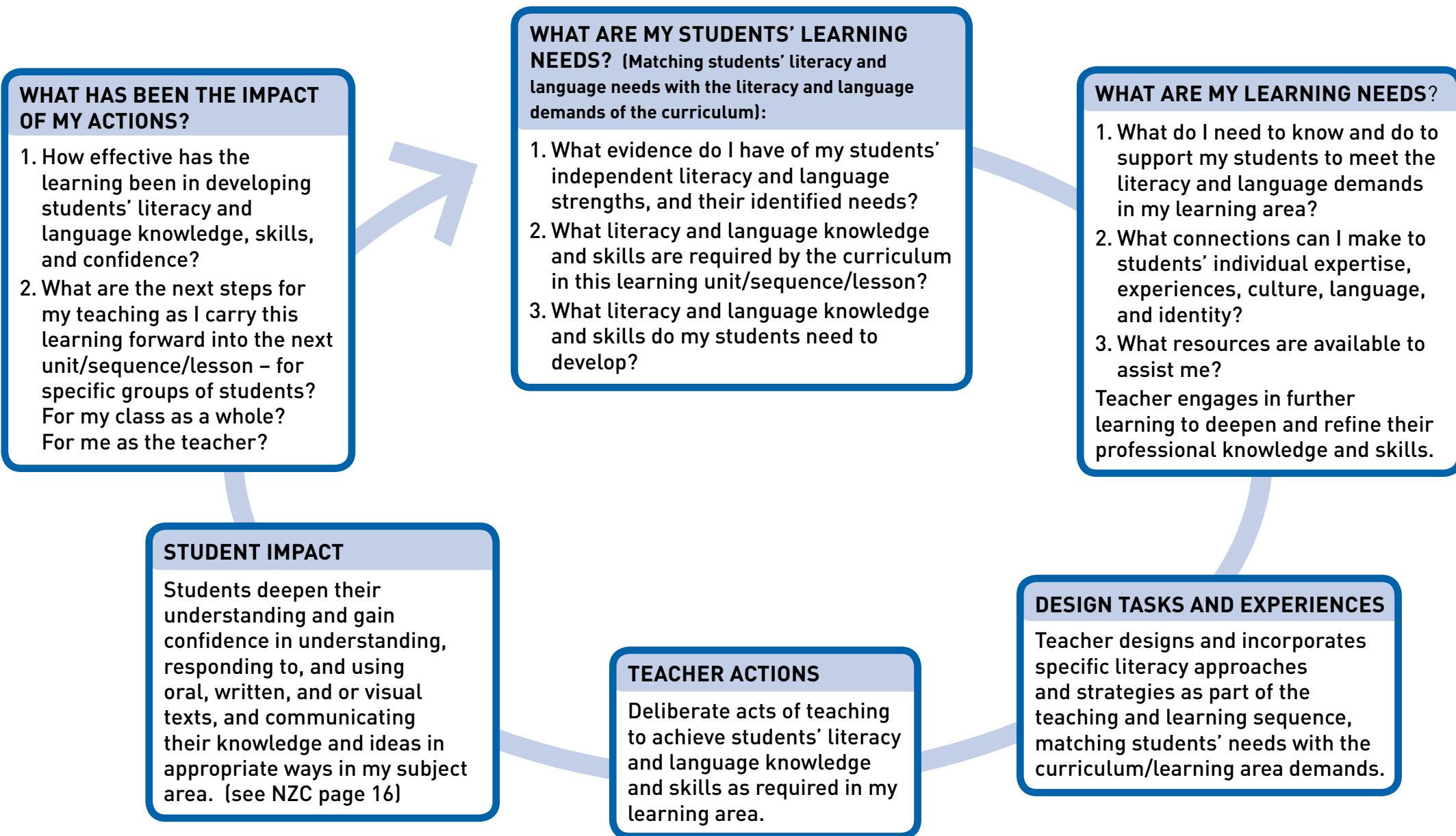


Teacher inquiry and knowledge-building cycle to promote valued student outcomes in literacy and language within learning areas



Adapted from the 'Teacher inquiry and knowledge-building cycle diagram' in Timperley, H., Wilson, A., Barrar, H. & Fung, I. (2007). *Teacher Professional Learning and Development Best Evidence Synthesis*. University of Auckland. (www.educationcounts.govt.nz/publications/series/2515/15341)